

Vertical Multi-Stage In-Line Pumps 立式多段泵浦



Construction

Vertical multi-stage pumps with suction and delivery connections of the same diameter and arranged along the same axis (in-line). Corrosion-resistant bearing sleeves lubricated by the pumped liquid. A pump with thrust bearing and sleeve coupling for use of any standard motor with IM V1 construction.

Version with frequency converter (on request)

Applications

For water supply systems.
For clean non-explosive liquids, without solid, filamentary or abrasive matter (with adaptation of sealing materials on request).
A universal pump for civil and industrial use, for pressure-boosting systems, fire-extinguishing systems, high-pressure washing plants, irrigation, agricultural uses and sport installations.

Operating conditions

Temperature of liquid: from -15 °C to +110 °C.
Operating environment temperature: up to 40 °C.
Maximum permissible pressure in pump casing: 25 bar.

Motor

Standard-type: 2-4 pole induction motor, 60 Hz.
Motor suitable for operation with frequency converter.
Classification scheme IE2 for three-phase motors from 0,75 kW to 5,5 kW, IE3 from 7,5 kW.
Construction IM V1.
Insulation class F. Protection IP 55.
Three-phase with rated voltage: 220/380 V, 220/440 V, up to 3 kW;
380/660 V, from 4 to 45 kW;

結構

直立多段不銹鋼泵浦，吸水和排水口尺寸相同，且並列於同一直線上(In-line)。
抗腐蝕之軸套可藉由泵浦輸送之液體加以潤滑。
泵浦軸承及連軸器之設計，可與任何IM V1標準結構之馬達搭配使用。

搭配變頻器（依需求提供）

應用

- 供水系統。
- 無爆裂物質、無顆粒、無雜質、或不具腐蝕性之乾淨液體（依需求供應適用之軸封材質）。
- 泛用型泵浦，適用於民生、工業、加壓系統、消防設備、高壓清洗機、農業灌溉及運動場地之應用。

操作條件

液體溫度-15°C至+110°C
周圍溫度至40°C
泵浦本體可承受最大壓力值為25 bar。

馬達

標準類型：2-4極感應電動馬達，60Hz。
馬達適用運作於變頻器。
三相0,75-5,5kW以上使用歐盟效能指標高效率IE2，7,5kW以上為IE3。
結構為IM V1。
絕緣等級：F
保護等級：IP55
三相之額定電壓：3kW以下為220/380V, 220/440V
4至45kW為380/660V

MXVL 25, 32, 40

All parts that come into contact with the liquid, including wet-end covers, are in chrome-nickel-molybdenum stainless steel AISI 316L.

Materials (wetted parts)

Component	Material
Flange - External jacket Suction casing Delivery casing Stage casing - Impeller Lower cover - Upper cover Spacer sleeve	Chrome-nickel-molybdenum steel 1.4404 EN 10088 (AISI 316L)
Pump shaft Plug	Chrome-nickel-molybdenum steel 1.4404 EN 10088 (AISI 316L)
Bearing sleeve Bearing in stage casing	Corrosion-resistant, cemented carbide Ceramic alumina
Mechanical seal ISO 3069 KU	Hard metal/Carbon/EPDM.
Wear ring	PTFE
O-rings	NBR

Direction of rotation: clockwise as seen from the motor.

Variants (to be specified when ordering)

Pump with threaded ports (G). Pump with flanged ports (F).
Pump without motor. Pump with standard motor.

Other variants (on request)

With counter-flanges in chrome-nickel steel.
O-rings FPM. - Other mechanical seal.
Pump with motor of Client's choice (if available).
Single-phase motor 220 V, up to 2.2 kW.
Other voltage ratings.
Higher or lower liquid or ambient temperatures.

MXVL 50, 65, 80, 100

Internal parts in contact with the liquid in chrome-nickel stainless steel, AISI 316L with pump casing and upper cover in cast iron.

Materials (wetted parts)

Component	Material
Pump casing Upper cover	Chrome-nickel-molybdenum steel 1.4404 EN 10088 (AISI 316L)
External jacket Stage casing Impeller Spacer sleeve	Chrome-nickel-molybdenum steel 1.4404 EN 10088 (AISI 316L)
Pump shaft Plug	Cr-Ni-Mo steel AISI 316 (AISI 329 for MXV 100) Cr-Ni steel AISI 316
Bearing sleeve Bearing in stage casing	Corrosion-resistant, cemented carbide Ceramic alumina (Corrosion-resistant, cemented carbide for MXV 100)
Mechanical seal ISO 3069 - KU	Hard metal/Carbon/EPDM
Wear ring	PTFE
O-rings	NBR (EPDM for MXV 100)

Direction of rotation: anticlockwise as seen from the motor (clockwise as seen from the motor for MXV 100).

Variants (to be specified when ordering)

Pump without motor. - Pump with standard motor.

Other variants (on request)

O-rings FPM. Other mechanical seal.
Pump with motor of Client's choice (if available).
Other voltage ratings.
Pump with support feet for horizontal installation (H1 or H2).
Support feet for horizontal installation, set.
Welding counter-flanges, PN 25 (steel).
Higher or lower liquid or ambient temperatures.

MXVL 25, 32, 40

與液體接觸之全部零件，皆為AISI 316L不銹鋼材質。

材質（與液體接觸部分）

零件	材質
法蘭 - 泵浦外殼 吸入端外殼 出水罩 導葉輪 - 葉片 底盤 - 頂盤 軸套	不銹鋼材質 1.4404 EN 10088 (AISI 316L)
泵浦軸心 塞頭	不銹鋼材質 1.4404 EN 10088 (AISI 316L)
水潤滑軸承 導葉輪含軸承	抗腐蝕，強化碳化合物 氧化鋁陶瓷
機械軸封 ISO 3069 KU	硬金屬 / 碳精 / EPDM
磨損環	PTFE
O型環	NBR

運轉方向：從馬達端往下看，為順時針方向。

泵浦結構之搭配（請於訂購時指定）

(G)牙口泵浦 (F)法蘭口泵浦
泵浦不含馬達 泵浦含標準型馬達

其他搭配（依需求提供）

搭配不銹鋼相對法蘭
FPM材質O型環
其他材質機械軸封
泵浦搭配客戶指定之馬達
單相220V、2.2kW以下之馬達
其他額定電壓
更高或低液體或周圍溫度需求

MXVL 50, 65, 80, 100

與液體接觸之內部零件和泵浦外罩為AISI 316L不銹鋼材質，頂盤為鑄鐵。

材質（與液體接觸部分）

零件	材質
下座 頂盤	不鏽鋼 1.4404 EN 10088 (AISI 316L)
泵浦外罩 導葉輪 葉片 軸套	不鏽鋼 1.4404 EN 10088 (AISI 316L)
泵浦軸心 塞頭	不鏽鋼 AISI 316 (AISI 329 為 MXV 100) 不鏽鋼 AISI 316
水潤滑軸承 導葉輪含軸承	抗腐蝕，強化碳化合物 氧化鋁陶瓷 (MXV 100 為抗腐蝕，強化碳化合物)
機械軸封 ISO 3069 KU	硬金屬 / 碳精 / EPDM
磨損環	PTFE
O型環	NBR (MXV 100 為 EPDM)

運轉方向：從馬達端往下看，為逆時針方向。
(MXV 100為順時針方向)

泵浦結構之搭配（請於訂購時指定）

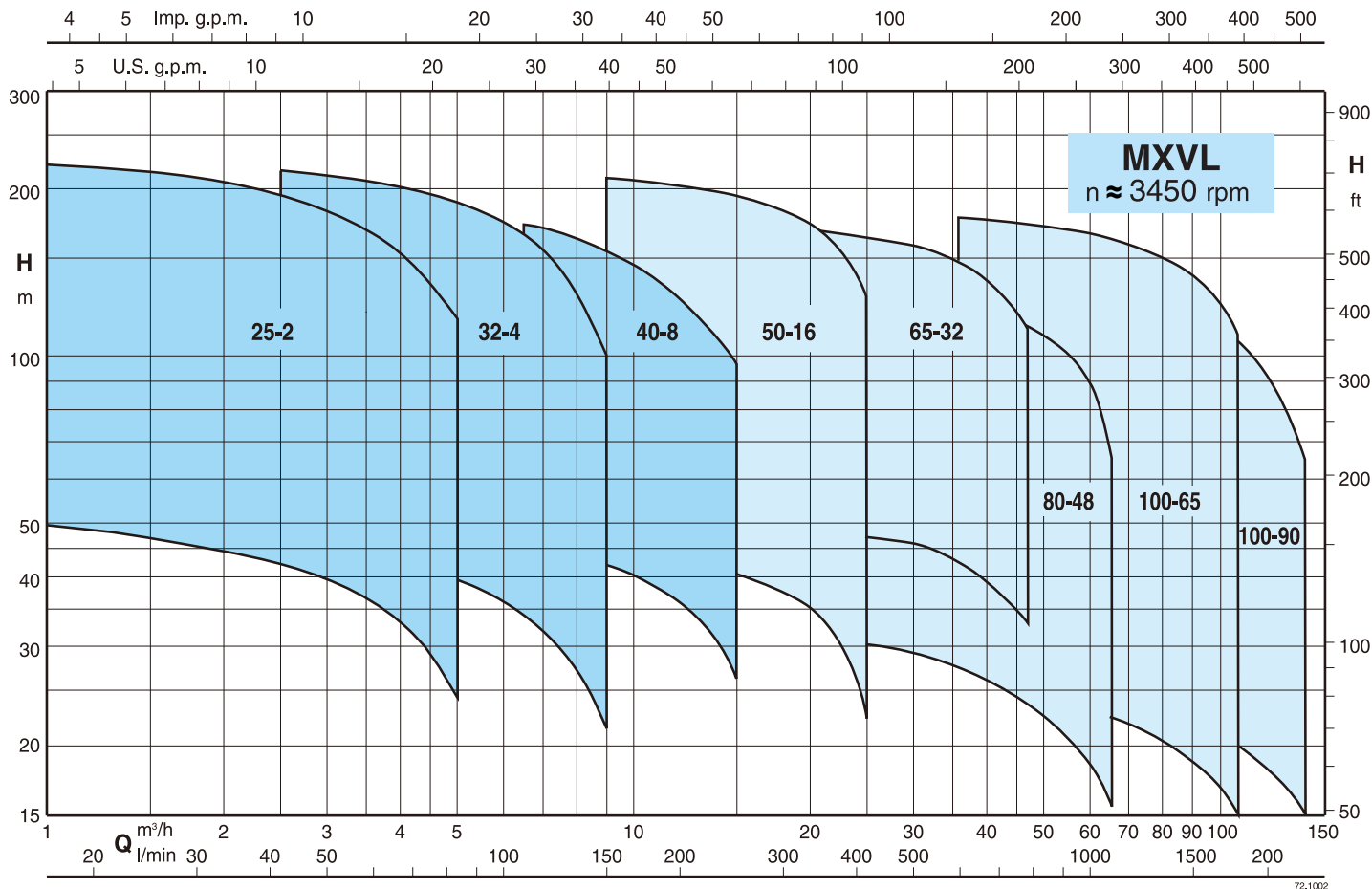
泵浦不含馬達 - 泵浦含標準型馬達。

其他搭配（依需求提供）

FPM材質O型環
其他材質機械軸封
泵浦搭配客戶指定之馬達
其他額定電壓
泵浦以臥式安裝(H1或H2)所需搭配之腳架
臥式安裝所需之腳架組件
焊接相對法蘭，PN 25(不鏽鋼)
更高或低液體或周圍溫度需求

Coverage chart - 性能總表

n ≈ 3450 rpm



Designation

MXV L EI 50-16 05 H1 *
MXV L EI 25- 2 05 G *

Series _____
 AISI 316 version _____
 With frequency converter I-MAT _____
 DN ports in mm _____
 Rated capacity in m³/h (n = 3450 rpm) _____
 Number of stages _____

Construction variants

threaded ports (for MXVL 25,32,48) _____ G
 flanged ports (for MXVL 25,32,48) _____ F
 with support feet for horizontal installation H, variant 1
 (for MXVL 50,65,80,100) _____
 with motor (or without motor) _____

* with no further designation = with standard motor

型號說明

MXV L EI 50-16 05 H1 *
MXV L EI 25- 2 05 G *

機種代號 _____
 AISI 316材質 _____
 加裝I-MAT變頻器 _____
 DN口徑 (單位:mm) _____
 水量單位 m³/h (n = 3450 rpm) _____
 葉片段數 _____

結構上特殊需求

牙口 (適用於MXVL 25,32,48) _____ G
 法蘭口 (適用於MXVL 25,32,48) _____ F
 臥式安裝所配置腳架
 (適用於MXVL 50,65,80,100) _____
 附馬達 (或無附馬達) _____

*且無任何描述=附標準馬達

For characteristic curves, dimensions and weights see MXV

性能曲線和尺寸與重量可參考MXV